



**Safety starts with Stell**

Systematic labelling



**stell**



# Our identity revolves around labelling



Since 1976, we have established ourselves as a modern group of medium-sized companies on the market for labelling and signage solutions. The labelling of process plants as well as health and safety signing in industrial environments are our core competencies.

High-quality materials and distinct industry knowledge ensure a comprehensible and safe working environment for personnel, employees and visitors.



# Our products are systematically installed

## PLANT LABELLING

**Process plant labelling must be systematic!**

Our signs and the appropriate fastening materials allow you to employ a uniform approach to labelling components, pipes and containers. Systematically aligned with each other, recognisability, consistency and resistance to environmental influences go hand in hand.



## SAFETY SIGNS

**Labelling must provide recognition value!**

We offer reliable health and safety signing in accordance with current standards and laws. Various sizes and fastening options are available from stock as standard. In addition, we produce the signs you require using internationally standardised symbols as well as instructions or texts that are tailored to your needs.







## PLANS AND SIGNS FOR THE FIRE BRIGADE

**Preventive fire protection is a matter of trust!**

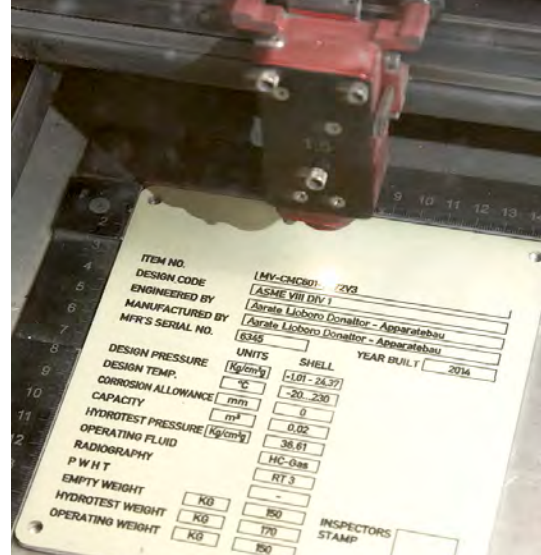
We know the current standards, but we always adapt your plans to the needs of the emergency services on site. Fire brigade plans and route maps are prepared by us – professional on-site survey included. In collaborating with our customers, we use the latest drawing software for our work and thus ensure clear instructions where they are needed.



## INDUSTRIAL SIGNS

**Made in Germany! Durable products require steadfast quality**

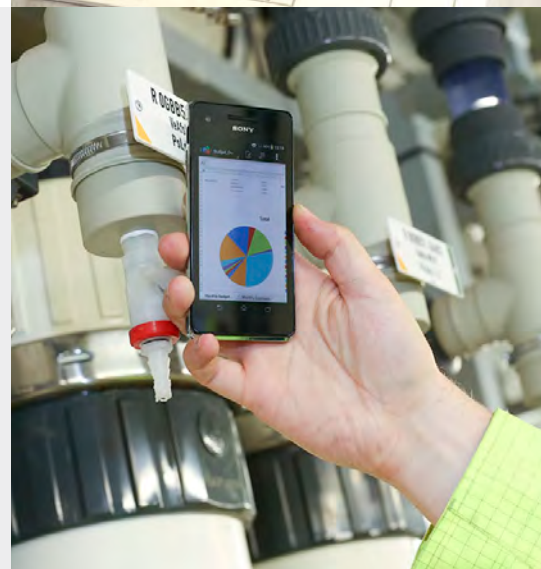
Our robust signs can withstand harsh environments and display the desired information in the long term. Whether it's for your scales, identification plates, labels or machine plates, we'll find the right material and an approach that's properly adapted to your production site.



## SMART SIGNS AND THE STELL INSPECTIONS APP

**Signs can be SMART, too!**

Mobile applications offer greater process reliability and efficiency for inspections and maintenance work. With the "Stell Inspections" app, your mobile device becomes the ideal companion for the maintenance process. Our Auto-ID-capable signs provide the ideal starting point to clearly identify your equipment and link it to the modern app system.



# Comprehensive labelling projects

**We take a systematic approach – from the consulting phase through to project completion.**

Our company independently covers each and every step that's involved and is therefore able to respond your specific project planning. The range of products and services we offer is seamlessly linked and simplifies project implementation in the process.

## **Step 1:**

### **PROJECT PLANNING**

Our employees conduct on-site visits to record and examine all the specific requirements involved, thus laying the groundwork for proper project implementation. This procedure allows the material design, relevant quantities, signage text and installation locations to be precisely defined and, if desired, coordinated with you. In the event of missing P&IDs or plans, we'll check and draw new documents for you so that your project can get off to an effective start.

## **Step 2:**

### **PRODUCTION**

The signs and plans are produced according to high quality standards in Bocholt, Germany. This process is flexibly adjusted to the project plan and can be revised if necessary. We also have a well-stocked warehouse with standardised signs and fastening materials that are on hand to ensure smooth project processing.

## **Step 3:**

### **INSTALLATION**

Fifty permanently employed, SCC-certified fitters with sound background knowledge and independent working methods come on site to install the signs exactly where they need to be. In performing this task, they refer to the relevant P&IDs and plans. Our team leaders regularly confers with you on the project's progress and documents it along the way. If desired, this documentation can be done in digital format.



# The Stell Group at a glance

## **ENDURING and RELIABLE**

- Over 45 years of experience
- Owner-operated Group of family businesses
- Numerous framework agreements with large corporations
- Sector-specific project references

## **COMPETENT and CUSTOMER-ORIENTED**

- 130 employees worldwide (DE, NL, IND)
- 90% added value in our own company
- 3,500m<sup>2</sup> production and storage space  
with 7,500 stocked products
- Globally networked and active

## **CERTIFIED and COMMITTED**

- DIN membership in NASG / NSMT
- Chair of the ISO TC 145 / SC 2
- Safety certificates SCC<sup>P</sup> / VCA
- Quality certificates ISO 9001 / Wheelmark D
- IMO-certified products / Wheelmark B



### **STELL Sign Projects India Private Limited**

Flat 15C, 1st floor, Liberty Society, North  
Main Road, Koregaon Park, Pune,  
411004 Maharashtra, India  
Phone: 0091 97658 88360  
[info@stell.co.in](mailto:info@stell.co.in)  
[stell.co.in](http://stell.co.in)

