



Professional plant and process labelling

Proven safety signage solutions



**Stell**

Stell Sign Projects India Private Limited

# German expertise meets Indian dynamic markets



Stell is a German market leader and one-stop-shop for process labelling and safety sign solutions since 1976.

Stell Sign Projects India is a 100 % subsidiary of STELL GmbH Germany, providing advanced and custom-made labelling and signage solutions for the Indian market.

With 6 years of hands-on experience and an acknowledged customer base in different industry sectors, the labelling of process and power plants as well as health and safety signing in industrial environments are our core competencies. High-quality materials and distinct industry knowledge ensure a comprehensible and safe working environment for personnel, employees and visitors.

**Stell Sign Projects India** offers the perfect match for your professional labelling demands



# Plant and process labelling

## Clear. Comprehensible. Efficient.

Our wide range of sign and labelling options, fail-proof fastening materials and professional installation services create a safe and clearly structured work environment – saving you time and money in the process! For example ...

### STECKSYSTEM – PATENTED BY STELL

The most versatile and most resistant labelling system on the market. The silkscreen printed symbols, letters and numbers made of our specially developed PMMA plastic can be freely chosen, adjusted and replaced. Highly resistant against UV and many chemicals. 100% chloride-free.



### SELF-ADHESIVE PIPE MARKING

A new standard in pipe marking. With customizable widths as needed, the layout can be individually designed or, for example, set according to pipe marking ISO 20560, including GHS symbols. The specially laminated rolls come in various lengths and offer high resistance against UV and harsh environments, making them also a perfectly suitable choice for Marine applications.



### PRINTED SIGNS

With almost unlimited printing possibilities (QR codes, bar codes, RFID) these durable signs can take care of most of your labelling needs while giving you the freedom to choose your very own individual layout designs.

### ENGRAVED SIGNS

The classic when it comes to price-performance ratio. Simple and long-lasting labelling, even in temperature critical areas.

Printed and Engraved Signs can be installed by means of a special bracket or glued on. Also available as aluminium versions and other material variations.



# Safety signs and guidance systems

## Safety pays all ways

Clear communication serves as the basis for a safe and efficient working environment. Chemical parks, power stations, production plants, business premises and also ships must therefore be equipped with systematic labelling and signage for emergency situations and day-to-day operations alike. For example ...

### SAFETY IDENTIFICATION SIGNS

Safety signs, following ISO 7010, are standardised in their message, graphical symbol and safety colours in order to ensure international understanding. While rescue and fire protection symbols are available in standard form or alternatively with a photoluminescent background, we also offer standardized prohibitory, mandatory action and warning symbols on a white background.



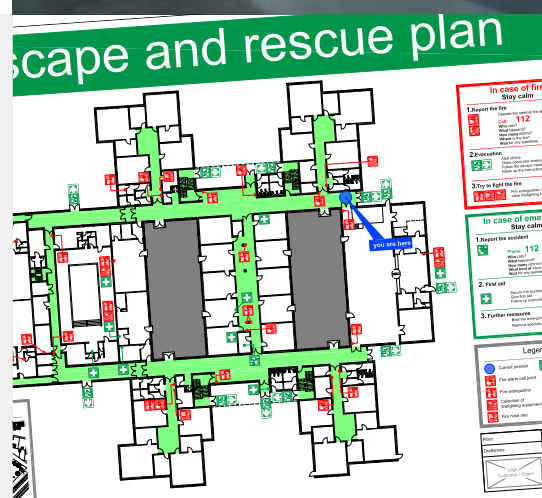
### GUIDING SYSTEM LUXOLIGHT®

A photoluminescent safety way guidance system serves as an important protective measure in the event of heavy smoke or power failure. Thanks to the optical markings and direction indicators, those affected can be led to a safe environment or assembly points. Depending on the on-site conditions, we offer our safety guidance system in various heights, materials and design variants.



### ESCAPE and RESCUE PLANS

The displayed information for employees and visitors in buildings is an integral part of safety identification. For this reason, our qualified in-house CAD department specialises in preventive fire protection. We prepare, deliver and install the necessary plans for you – in compliance with all relevant laws, regulations, guidelines and standards.



# Coordinated project implementation

## Step by step

**We take a systematic approach – from the consulting phase through to project completion.**

Our company independently covers all steps involved. This way, we are able to respond to your specific demands. The range of the products and services we offer is seamlessly linked and simplifies project implementation in the process.

### Step 1:

#### PROJECT PLANNING

Our employees conduct on-site visits to record and examine all your specific requirements. In cooperation with you we will precisely define material designs, relevant quantities, signage texts and layouts as well as installation locations, providing you with top results at very competitive prices.



### Step 2:

#### PRODUCTION

The signs, rolls and stickers are produced according to highest quality industrial standards in Stell's own production plant in Bocholt, Germany. Also in big numbers and at a very fast pace.



### Step 3:

#### INSTALLATION

Our skilled and trained technicians come on site to professionally install the signs – exactly where they need to be and referring to any relevant P&IDs and plans. Our team leaders regularly confer with you on the project's progress and document it along the way.



# Stell Sign Projects India and the Stell Group at a glance

## **EXPERIENCED and COMMITTED**

- Total of 45 years of experience
- Owner-operated group of family businesses
- Numerous framework agreements with large corporations

## **COMPETENT and CUSTOMER-ORIENTED**

- Global network with 130 employees worldwide (DE, NL, IND)
- 90% added value in our own Group of companies
- 3,500m<sup>2</sup> production site for tailor-made labelling solutions
- 7,500 readily available products on stock

## **CERTIFIED and ACKNOWLEDGED**

- DIN membership in NASG / NSMT
- Chair of the ISO TC 145 / SC 2
- Safety certificates SCCP / VCA
- Quality certificates ISO 9001 / Wheelmark D
- IMO-certified products / Wheelmark B

## **And there's more!**

Please get in contact with us to get to know our full product and services portfolio.

We are looking forward to cater to your specific demands!



### **Stell Sign Projects India Private Limited**

Registered Office: Office number Flat 15 C, 1st floor, Liberty Society, North Main Road,  
Koregaon Park, Pune – 411001, Maharashtra, India  
Website: [stell.co.in](http://stell.co.in) – Email id: [info@stell.co.in](mailto:info@stell.co.in) – Contact no.: +91 9765888360  
CIN: U74120PN2012FTC168013